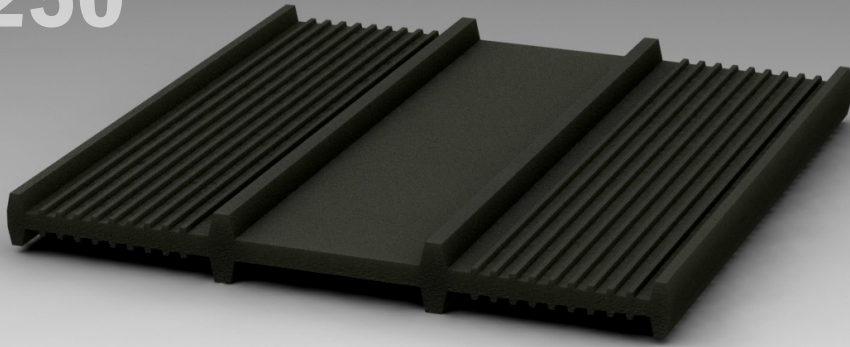


# Waterstop Type F250



## TYPICAL APPLICATION

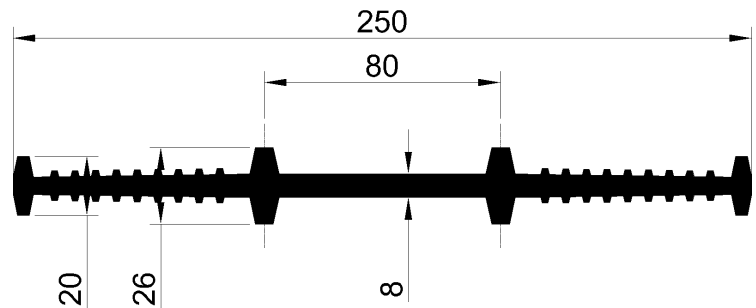
**culverts, retaining walls, bridge abutments, foundations, basements, underground construction works, tunnels, aqueducts**

Trelleborg F series waterstops are typically used in new build constructions for both movement joints and construction joints in low performance application.

## ADVANTAGES

Easy to install, highest performance, movement in all directions possible, bespoke frame design possible.

## TECHNICAL PROPERTIES



Gross dimensions	250 x 26 mm
Weight	2.8 kg/m
Materials	SBR
Elongation at break	≥ 380%
Tensile strength	≥ 10 N/mm <sup>2</sup>
Hardness	62 ± 5 Shore A
Capacity	-

Product specifications and performance may be subject to project specific conditions or local design constraints. For advice on product performance, application and installation, construction possibilities and technical queries contact us.

## GET IN TOUCH

**Trelleborg Ridderkerk B.V.**

**Website: [trelleborg.com/marine-and-infrastructure](http://trelleborg.com/marine-and-infrastructure)**

**Email: [marine\\_infra@trelleborg.com](mailto:marine_infra@trelleborg.com)**

**Phone: +31 (0)180 495 555**